



## Franklin County Public Health Is Accredited!

Franklin County Public Health (FCPH) has achieved national accreditation through the Public Health Accreditation Board (PHAB). The national accreditation program works to improve and protect the health of the public by advancing and ultimately transforming the quality and performance of the nation's state, local, Tribal, and territorial public health departments. FCPH is one of only 117 (of the nearly 3,000 in the country) that have achieved accreditation through PHAB since the organization launched in 2011. The accreditation process helps to ensure that the programs and services FCPH provides are as responsive as possible to the needs of the community. With accreditation, FCPH is demonstrating increased accountability and credibility to the public, funders, elected officials and partner organizations with which we work.



For more information about PHAB, click [here](#).



## Naloxone Distribution

In March 2016, Franklin County Public Health (FCPH) received a \$44,789 grant from Ohio Mental Health and Addiction Services to purchase naloxone to provide to local law enforcement, emergency personnel and first responders so they can immediately respond to overdose situations in their community.

With the grant funds, FCPH purchased 1,090 syringes of naloxone and 174 Project DAWN (Death Avoidance With Naloxone) kits. As of March 2016, nine law enforcement and

## Flu Cases Rising in Franklin County



Franklin County is currently seeing a late increase in cases of influenza (flu). Hospitalizations and visits to the doctor have steadily been increasing over the past few weeks.

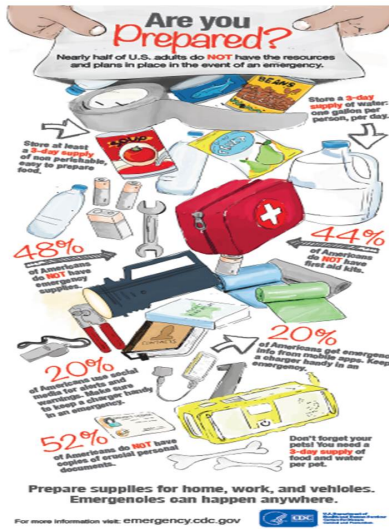
"Flu season" typically occurs in Ohio from November through March. Some years are worse than others and epidemics can occur periodically, like the 2009 H1N1 pandemic that affected the entire globe.

Influenza is an infection of the nose, throat, and lungs caused by a virus. There are two main types of influenza virus: A and B. Each type includes many different strains which tend to change each year. Symptoms begin 1-4 days after exposure and usually include: fever up to 104F, chills, body aches, headache,



If a disaster strikes in your community, you might not have access to food, water, or electricity for several days. You may think that you will have enough time to run to the grocery store, but stores quickly sell out of important supplies following emergency warnings.

Unfortunately, about half of adults in the United States do not have the resources and plans in place for a possible emergency. Preparing emergency kits for your family or school is an important step in keeping everyone safe and healthy during a disaster.



For more information about emergency preparedness and response and to view or print the above infographic, click [here](#).



Public Health Connection  
Call: April 21 @ 11 a.m.

Franklin County Public Health would like to invite each of our school districts to join our monthly Public Health Connection Call. We spend 30 minutes on the 3rd Thursday of every month updating partners on timely public health activities and projects. The call begins at 11:00 a.m. Connection information is always the same:

For audio only call 877-820-7831, enter passcode 5487125

To participate via Adobe Connect and see the presentation:

<http://fcph.adobeconnect.com/r9h1owblrg8/>

To listen to March's call and to view the slides, please click [here](#).

Have a question for us? Email [fcph@franklincountyohio.gov](mailto:fcph@franklincountyohio.gov) or call (614) 525-3160.



### Find Us on Social Media



Franklin County Public Health  
280 East Broad Street  
Columbus, Ohio 43215  
P: (614) 525-3160  
F: (614) 525-6672  
Email: [fcph@franklincountyohio.gov](mailto:fcph@franklincountyohio.gov)  
[myfcph.org](http://myfcph.org)