

Emergency Room Visits Due to Drug Overdoses: Weekly Surveillance Report for Sep 26 - Oct 02, 2016

Week Ending Date: 10/2/2016

Total Estimated Drug Overdose ER Visits for the week 138

Estimated Drug Overdose ER Visits by Zip Code (Top 10)

Zip	Number	Percent
43224	10	7.2%
43232	9	6.5%
43229	9	6.5%
(blank)	6	4.3%
43204	6	4.3%
43207	6	4.3%
43068	5	3.6%
43214	5	3.6%
43219	5	3.6%
43230	5	3.6%
Total	138	100%

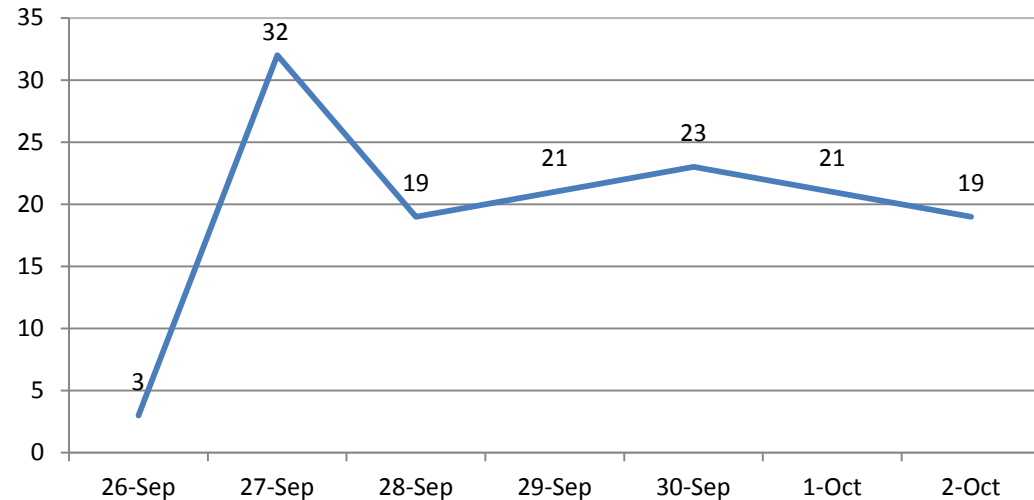
Estimated Drug Overdoses ER Visits by Gender

Gender	Number	Percent
F	51	37.0%
M	87	63.0%
Total	138	100.0%

Estimated Drug Overdose ER Visits by Age Group

Age Group	Number	Percent
<18	11	8.0%
18-34	54	39.1%
35-49	36	26.1%
50-64	25	18.1%
65 and over	12	8.7%
Total	138	100.0%

Est. Drug Overdose ER Visits by Day, Sep 26 - Oct 02, 2016



Notes: Drug overdose data is retrieved from the state's EpiCenter surveillance tool. "Overdose" cases include all emergency visits to a FranklinCounty medical provider in which drugs were identified as the cause of traumatic injury. Overdose cases were further refined by selecting only those cases where the reason for visit notes included the terms "OD" or "overdose." Visits for withdrawal or overdoses due to certain medication such as insulin were removed where identified. Zip codes refer to the zip code of residence of the patient visiting the ER. Data cited in this report represents the full-day totals from the day before the report's release.

It is important to note that these are estimated figures rather than a full and final count because initial diagnoses and/or details of a particular case may change from a patient's initial examination to his or her final outcomes, and because the limited case notes filed in EpiCenter may not include all details necessary to firmly classify a case as an overdose.

It is also important to note that case notes available through EpiCenter rarely identify the specific drug or drugs involved in an overdose. Therefore the figures here can be associated with any drug, not just heroin and/or fentanyl.

Columbus Fire Emergency Medical Services (EMS) Patients with Drug Overdose

Weekly Surveillance Report for Sep 26 - Oct 02, 2016

Week Ending Date: 10/2/2016

Total Estimated EMS Patients with Drug Overdose for the week 136

Estimated EMS Patients with Drug Overdose by Zip Code (Top 10)

Zip	Number	Percent
43201	7	5.1%
43203	18	13.2%
43204	12	8.8%
43205	7	5.1%
43206	5	3.7%
43207	8	5.9%
43209	4	2.9%
43211	15	11.0%
43215	9	6.6%
43219	5	3.7%
Total	136	100.0%

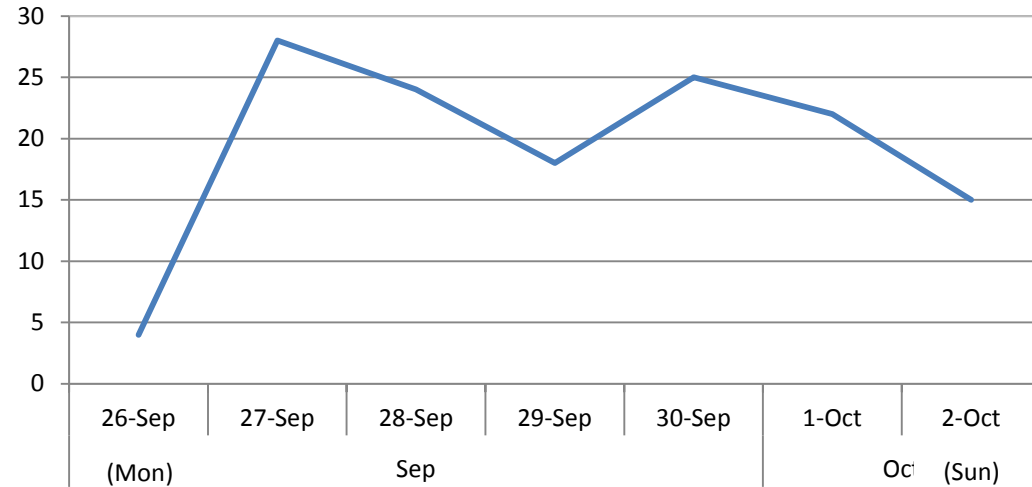
Estimated EMS Patients with Drug Overdose by Gender

Gender	Number	Percent
F	51	37.5%
M	85	62.5%
Total	136	100.0%

Estimated EMS Patients with Drug Overdose by Age Group

Age Group	Number	Percent
<18	4	2.9%
18-34	56	41.2%
35-49	36	26.5%
50-64	28	20.6%
65 and over	12	8.8%
Total	136	100.0%

Est. EMS Patients with Drug Overdose by Day, Sep 26 - Oct 02, 2016



Notes: Columbus Fire EMS data were received from Columbus Division of Fire. Data were limited to include EMS patients with the following impressions: Drug Abuse, IV Drug Abuse, Overdose, and Poisoning. Data was analyzed by Columbus Public Health, Office of Epidemiology. Figures can be associated with any drug, not just heroin and/or fentanyl.